

IOAPA:

OUTCOMES & ADVICE FOR MIDDLE SCHOOL COURSES

ABOUT THIS GUIDE:

This guide provides an overview of IOAPA's middle school course offerings to inform mentors and site coordinators on the average workload of each course.

IOAPA courses are fairly similar in terms of workload and pacing. Based on data from 2021, **Environmental Science** and **Physical Science** were slightly more difficult for students than the average IOAPA course, but were still well within the range of typical final grades for middle school courses (~70%).

SPECIAL NOTE: INTRODUCTION TO COMPUTER SCIENCE

IOAPA offers a **high-school-level computer science** course to middle schoolers, with both one semester and two semester options. This course is **recommended for students in grades 7-9 who are interested in computer science** and serves as preparation for AP-level computer science courses.

Mentors should facilitate a pace that allows students to maintain mastery, use the provided supplementary materials, and ensure adequate face-to-face time.

AT A GLANCE: MIDDLE SCHOOL STATISTICS

12

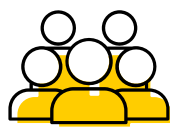
UNIQUE HIGH-SCHOOL-LEVEL COURSES PROVIDED



IOAPA provides advanced coursework free of charge to small schools, rural schools, and any schools without the resources to provide those courses on their own.

121

MIDDLE SCHOOL STUDENTS ENROLLED



Middle schoolers take high-school-level courses through IOAPA. These courses engage bright students and help to prepare them for high school and college.

236

SEMESTER ENROLLMENTS



Many of IOAPA's students take multiple two-semester courses, allowing them to pursue their interests and develop their potential sooner.

AVERAGE FINAL GRADE:

88.6%

IOAPA's course vendors provide final grade recommendations based on students' completion of coursework and assessments. IOAPA middle school students hit a B+ on average.

Highest: 95.7% Geometry
Lowest: 69.9% Physical Science

AVERAGE ON-SCHEDULE RATE:

96.5%

The on-schedule rate is the amount of overdue work relative to the amount of work due. This can indicate a course's pacing. A high number means most students are keeping up with their courses.

Highest: 100% (multiple courses)
Lowest: 84.5% Env. Science

AVERAGE COMPLETION RATE:

82.2%

The completion rate is the percentage of students who completed the course out of all those who started it. Most IOAPA students stick with their chosen course until the end.

Highest: 100% (multiple courses)
Lowest: 50% Algebra II*

GRADE OUTCOMES OVERVIEW

COURSE TITLE	AVG. FINAL GRADE
US History	88.0
Psychology	88.5
Creative Writing	88.0
Spanish	92.7
Phy. Science	69.9 <small>Lowest Avg.*</small>
Env. Science	71.8
Biology	90.2
Statistics	73.3
Algebra I	88.8
Algebra II	94.0
Geometry	95.7 <small>Highest Avg.*</small>

* As enrollment in IOAPA varies, some numbers may be atypical due to small sample size.
** Historical grades for computer science courses are unavailable due a change in course vendor.

*** Grades shown based on course vendor reported final grades. Actual grades on students' transcripts are at the schools' discretion and may vary from what is shown here.

FINAL GRADE DISTRIBUTION

